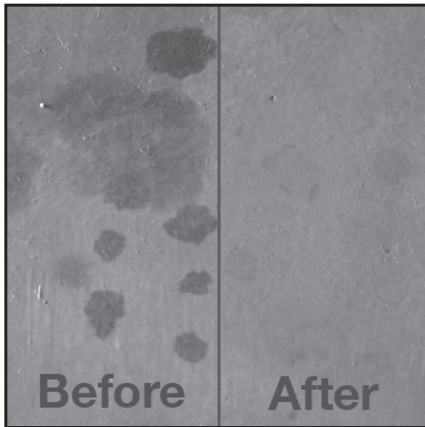


PAVER MAINTENANCE SUGGESTED COVERAGE and INSTALLATION GUIDE



BASIC INSTALLATION



STEP 1: CLEAN.

Thoroughly clean debris from pavers. Remove stains with SRW Cleaner/Degreaser and clean efflorescence with SRW Efflorescence Cleaner.



STEP 2: STABILIZE JOINT SAND.

Set joints with SRW Joint Set Sand Stabilizer. If using LG Paver Seal or HG Paver Seal, use regular Joint Sand and skip to "Step 3."



STEP 3: SEAL.

Apply with a clean, low pressure sprayer, that is approved for solvent usage. For textured pavers Immediately follow up by back rolling the sealer using a **SRW Slit Foam Roller**.

SUGGESTED COVERAGE



LG Low Gloss Paver Seal

100-150 sq. ft. per gallon, exterior pavement coverage (based on an 1/8" joint spacing). Quantity may vary depending on surface and application.



HG High Gloss Paver Seal

100-200 sq. ft. per gallon, exterior pavement coverage (based on an 1/8" joint spacing). Quantity may vary depending on surface and application.



PS Penetrating Paver Seal

Great for retaining walls and pavers. 150-200 sq. ft. per gallon. Quantity may vary depending on surface and application.



Efflorescence Cleaner

100-150 sq. ft. per gallon. Quantity may vary depending on surface and application.



Cleaner & Degreaser

200-300 sq. ft. per gallon when diluted.



SR Paver Grip
5 gallons Paver Seal™ use 1 lb. of Paver Grip™
1 gallon Paver Seal™ use 1 cup of Paver Grip™